

# Finding the Funds: NICHD Funding and Training Opportunities

Joseph Gindhart, Ph.D.

Deputy Director, Division of Extramural Activities

*Eunice Kennedy Shriver* National Institute of Child Health and Human  
Development

*April 17, 2024*

# Talk Outline

- Introduction to NICHD
- NICHD Funding
- Clinical Trials Networks
- Training and Career Development
- Some Advice

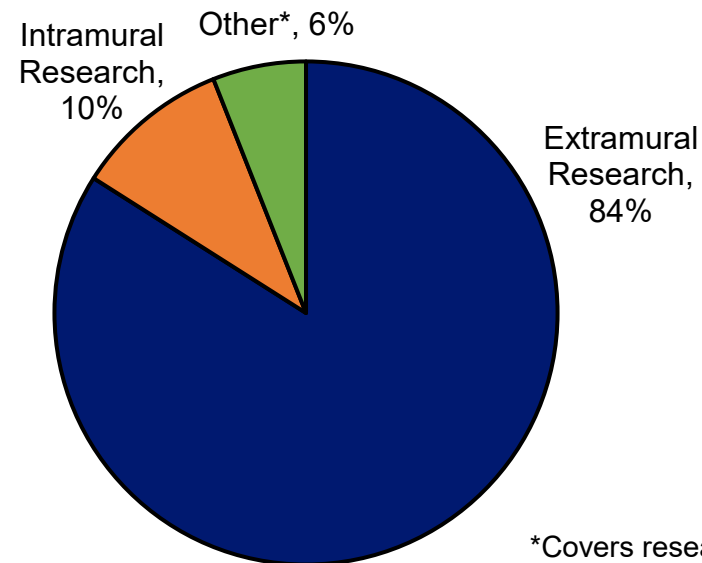


# About NIH

(<https://www.nih.gov/>)

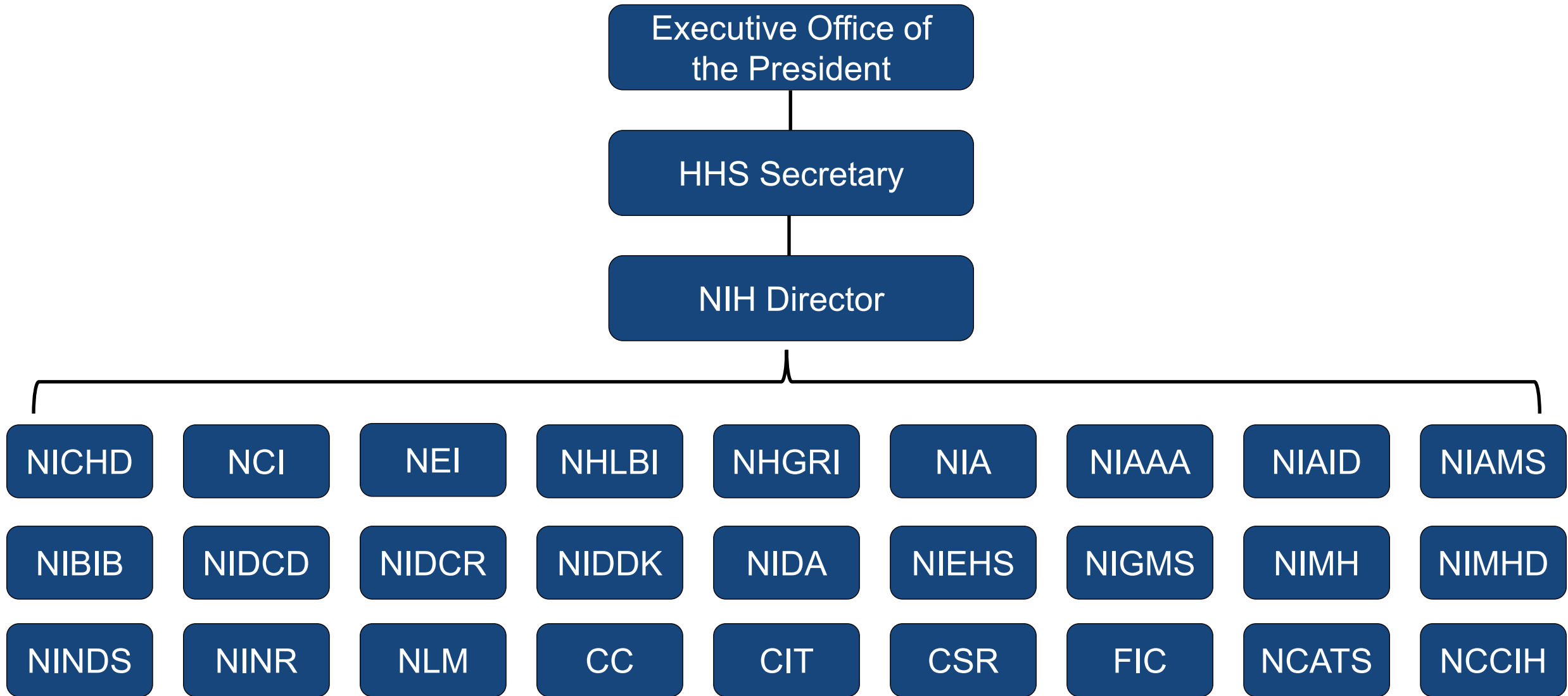


- Mission is to seek fundamental knowledge about nature and behavior of living systems and the application of that knowledge to enhance health, lengthen life, and reduce illness and disability
- Comprised of 27 institutes and centers (ICs)
  - NIH Office of the Director (OD) is responsible for setting policy for NIH and for planning, managing, and coordinating programs and activities across all ICs
- Largest funder of medical and behavioral research in the U.S. and worldwide

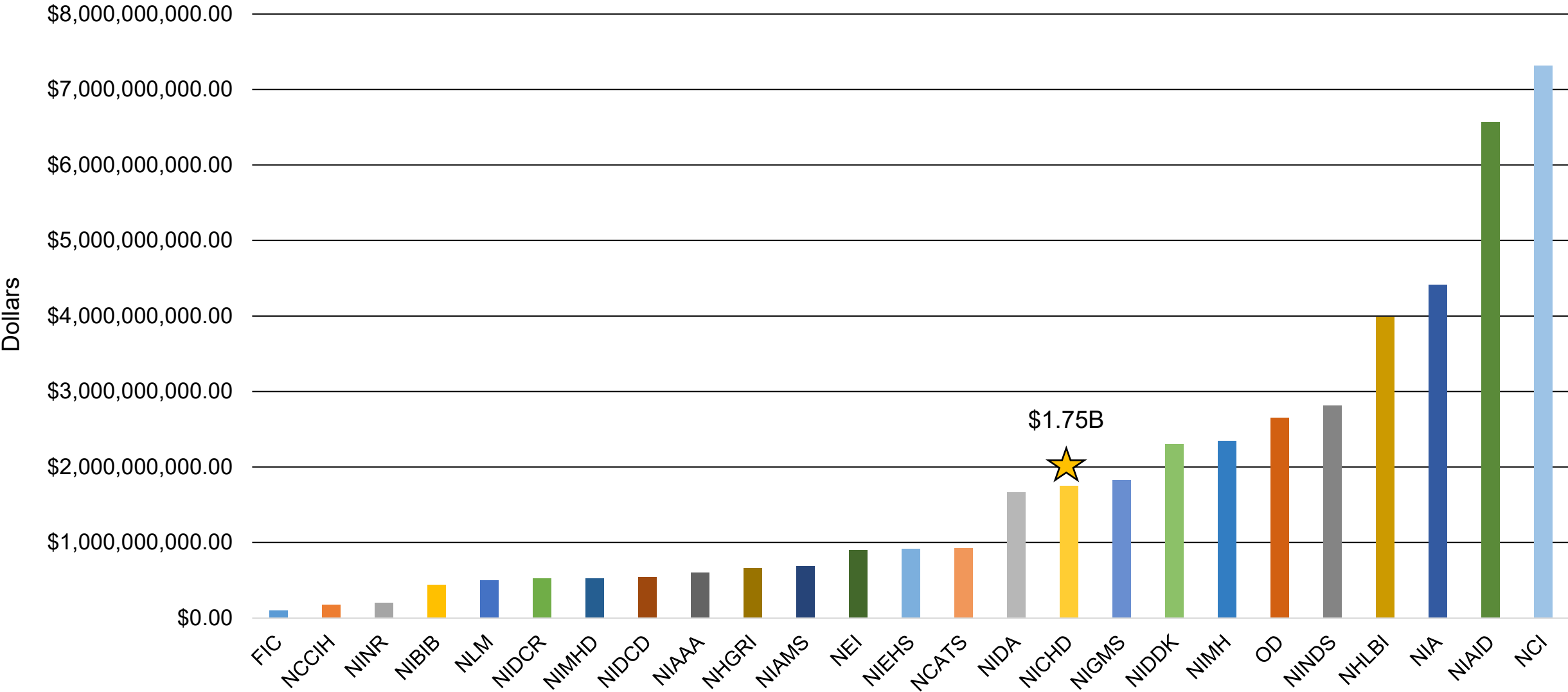


\*Covers research support, administrative, facility construction, maintenance, and/or operational costs

# NIH Institutes and Centers



# Funding by Institute/Center: FY23 Enacted



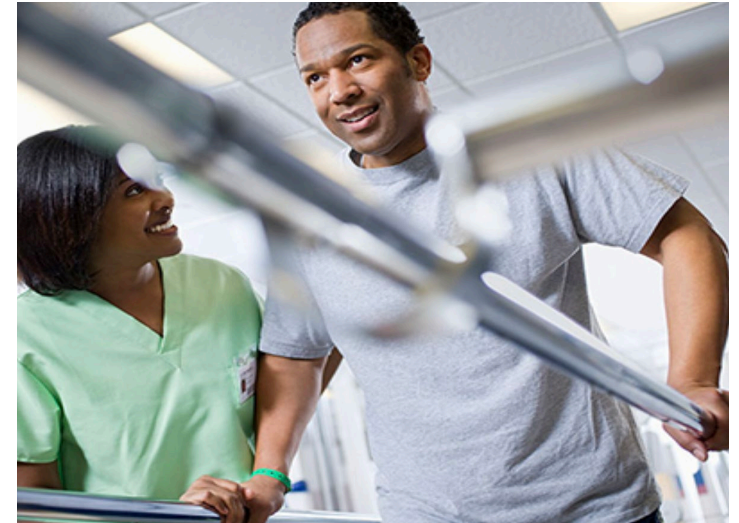


# Introduction to NICHD

# NICHD Mission & Vision

(<https://www.nichd.nih.gov/about>)

NICHD leads research and training to understand human development, improve reproductive health, enhance the lives of children and adolescents, and optimize abilities for all.



*Healthy pregnancies. Healthy children. Healthy and optimal lives.*



# About NICHD



- One of 27 institutes and centers within NIH
- Approximately \$1.75 billion budget (FY24 enacted)
  - Majority of budget funds extramural research projects that support NICHD's mission
  - Support is provided through grants and contracts made to outside institutions such as universities, medical schools, hospitals, and small businesses
  - Applications for this funding go through rigorous peer review process; requires approval from both stages
    - First level of review is carried out by NIH Center for Scientific Review or NICHD Scientific Review Branch
    - Second level of review is provided by National Advisory Child Health and Human Development (NACHHD) Council



# NICHD History



Congress directs NICHD to lead SIDS research  
**1974**



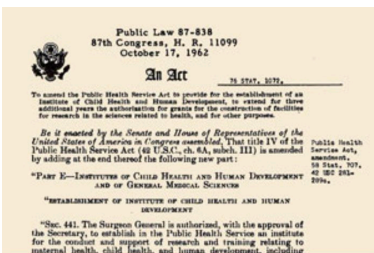
Best Pharmaceuticals for Children Act  
**2002**

Healthy pregnancies.  
Healthy children.  
Healthy and optimal lives.

New Mission and Vision  
**2020**

**1962**

NICHD Founded



**1990**

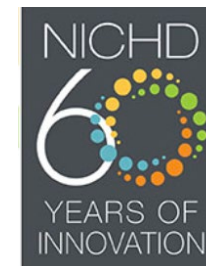
National Center for Medical Rehabilitation Research



**2007**

Renamed: *Eunice Kennedy Shriver* NICHD

**2022**



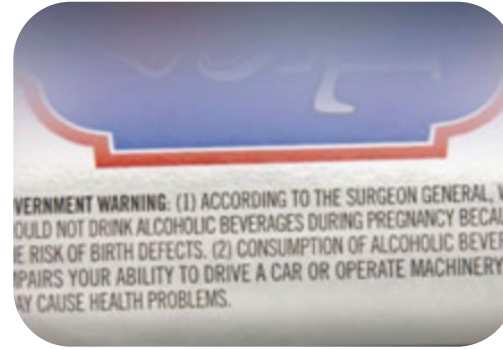
# NICHD Key Achievements



Creating Vaccines for Infectious Childhood Diseases



Developing and Expanding Newborn Screening



Identifying Fetal Alcohol Syndrome



Pioneering the First Home Pregnancy Test



Improving Care and Survival of Premature Infants



Protecting Infants During Sleep



Isolating the Causes of Genetic Disorders



Nearly Eliminating Perinatal Transmission of HIV



# Recent Scientific Highlights



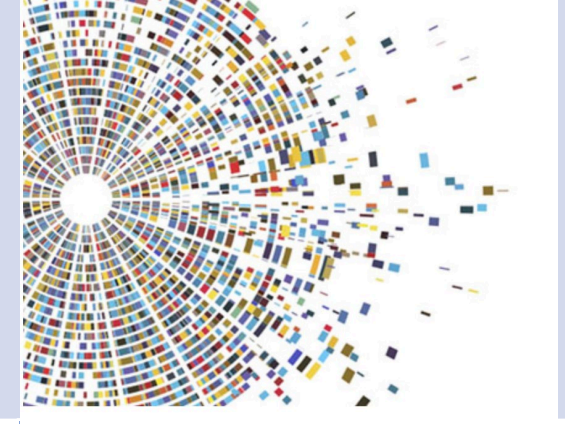
Study led by Division of Population Health Research found that exposure to caffeine in the womb, even in small amounts, may lead to shorter height in childhood.



NIH-funded researchers adapted an experimental cancer therapy to remove endometriosis tissue without the need for surgery in mouse models.



NCMRR-supported study suggested a possible way to accurately and noninvasively diagnose and monitor sports-related concussions.



DIR researchers identified transposable elements of the human genome (“jumping genes”) that may be linked to neurologic and psychiatric diseases.



# NICHD Organization



# Division of Extramural Research Scientific Branches

<https://www.nichd.nih.gov/about/org/der>



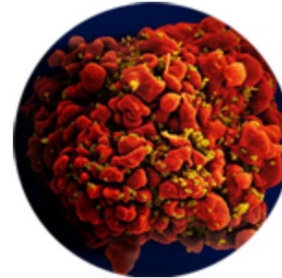
Child Development and Behavior



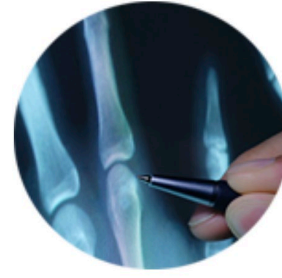
Developmental Biology and Congenital Anomalies



Gynecologic Health and Disease



Maternal and Pediatric Infectious Disease



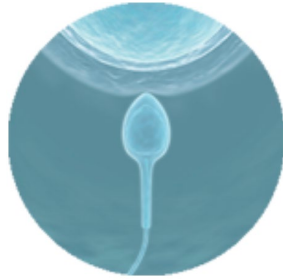
Pediatric Growth and Nutrition



Population Dynamics



Contraception Research



Fertility and Infertility



Intellectual and Developmental Disabilities



Obstetric and Pediatric Pharmacology and Therapeutics



Pediatric Trauma and Critical Illness



Pregnancy and Perinatology



# National Center for Medical Rehabilitation Research (NCMRR, <https://www.nichd.nih.gov/about/org/ncmrr>)

- Through basic, translational, and clinical research, NCMRR fosters development of the scientific knowledge needed to enhance the health, productivity, independence, and quality of life of people with physical disabilities
- Collaborates with many other government agencies and organizations to help advance medical rehabilitation research and care
- Supports research through research grants, training and career development activities, small business and technology grants, and research infrastructure



# Division of Intramural Research Divisions



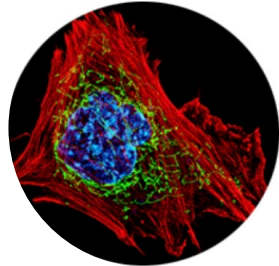
- Division of Developmental Biology
- Division of Translational Medicine
- Division of Molecular and Cellular Biology
- Division of Neuroscience and Cellular and Structural Biology
- Division of Basic and Translational Biophysics
- Division of Translational Imaging and Genomic Integrity
- Division of Obstetrics and Maternal-Fetal Medicine
- Division of Population Health Research
- <https://www.nichd.nih.gov/about/org/dir>

# Division of Intramural Research Affinity Groups

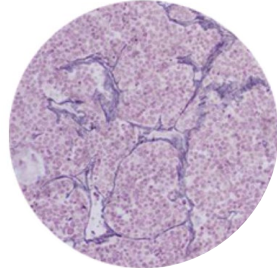
(<https://www.nichd.nih.gov/about/org/dir/affinity-groups>)



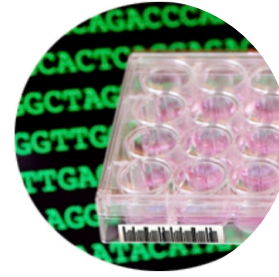
Aquatic Models  
of Human  
Development



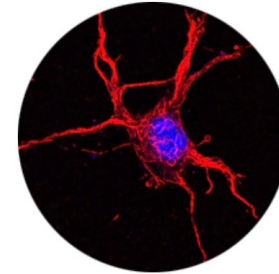
Cell and  
Structural  
Biology



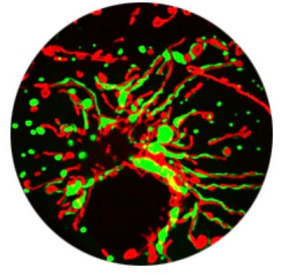
Developmental  
Endocrinology,  
Metabolism, Genetics,  
and Endocrine Oncology



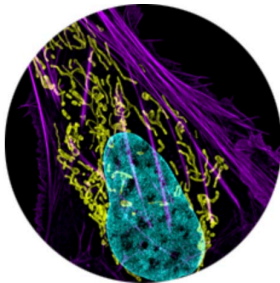
Genomics and  
Basic Mechanisms  
of Growth and  
Development



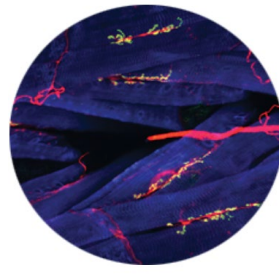
Molecular  
Medicine



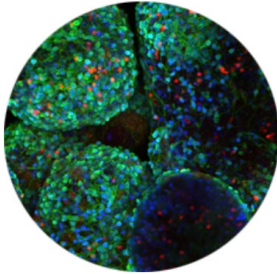
Physical  
Biology and  
Medicine



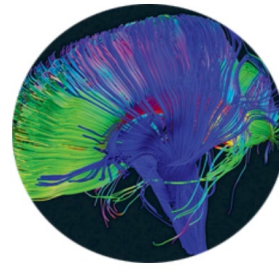
Bone and Matrix  
Biology in  
Development and  
Disease



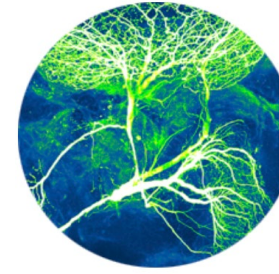
Cell Regulation  
and  
Development



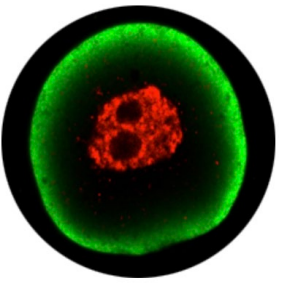
Genetics and  
Epigenetics of  
Development



Maternal-Fetal  
Medicine and  
Translational  
Imaging



Neurosciences



Reproductive  
Endocrinology &  
Infertility and Pediatric  
& Adolescent  
Gynecology

16 **Affinity Groups (AGs)** within DIR serve as hubs for groups of investigators who share closely aligned scientific interests.



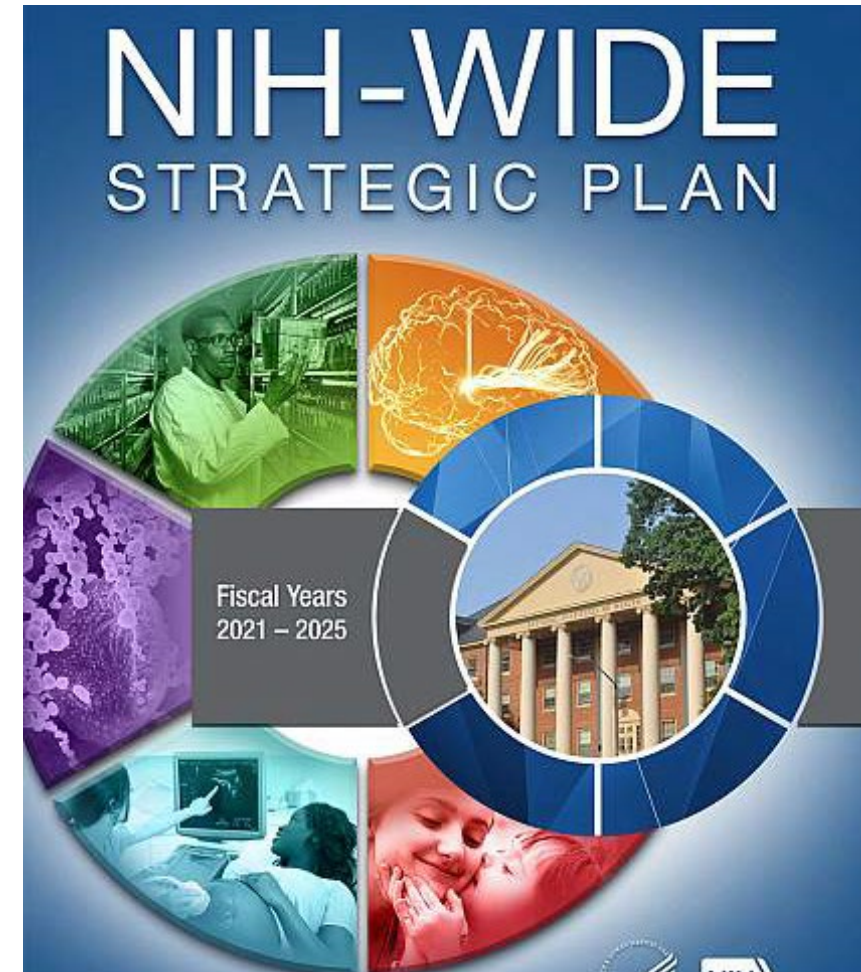


# NICHD and NIH Strategic Plans Establish Our Goals and Aspirations



Healthy pregnancies.  
Healthy children.  
Healthy and optimal lives.

#NICHDStrategicPlan



NIH-WIDE  
STRATEGIC PLAN

Fiscal Years  
2021 – 2025

<https://www.nichd.nih.gov/about/org/strategicplan>

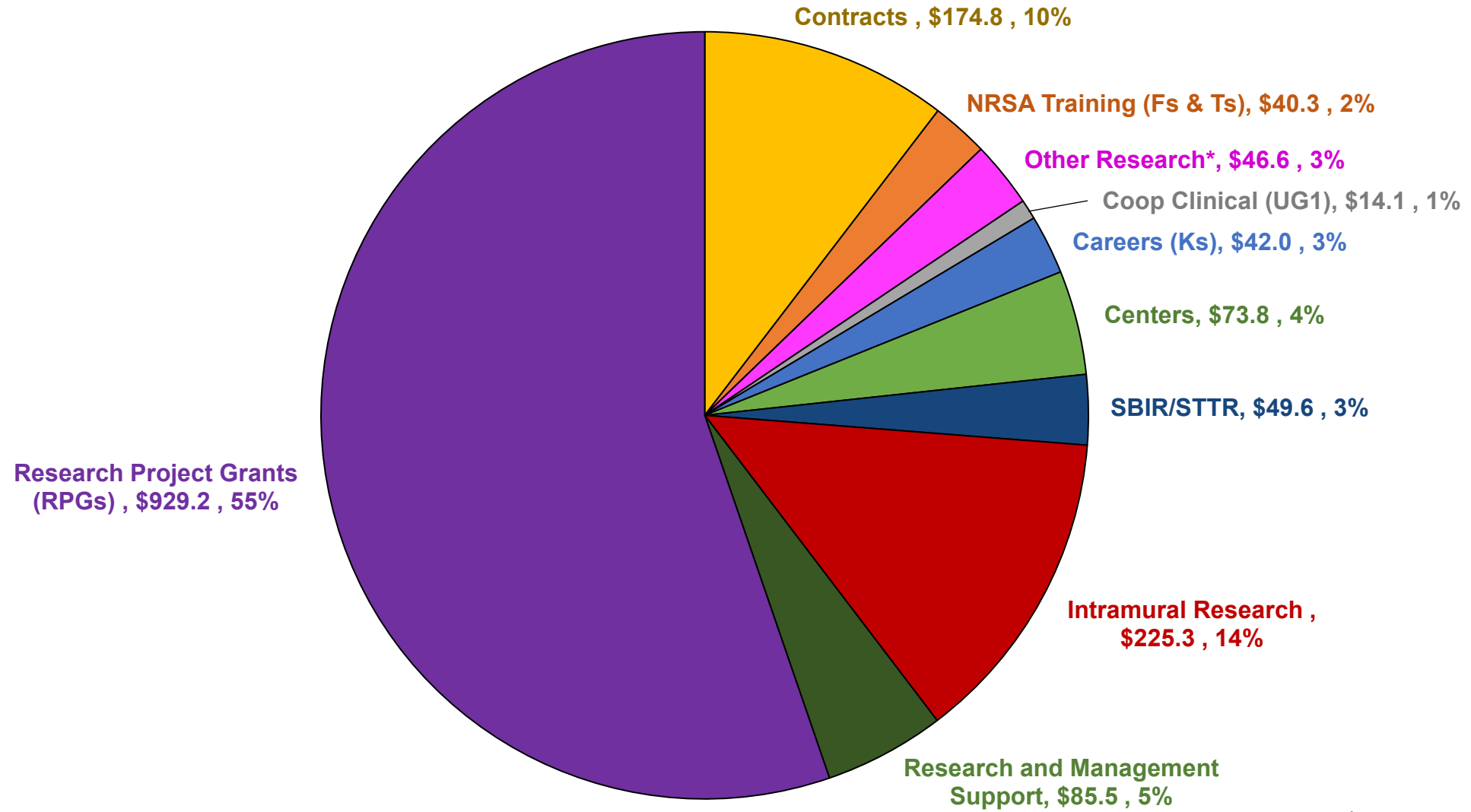
<https://www.nih.gov/about-nih/nih-wide-strategic-plan>





## **NICHD funding**

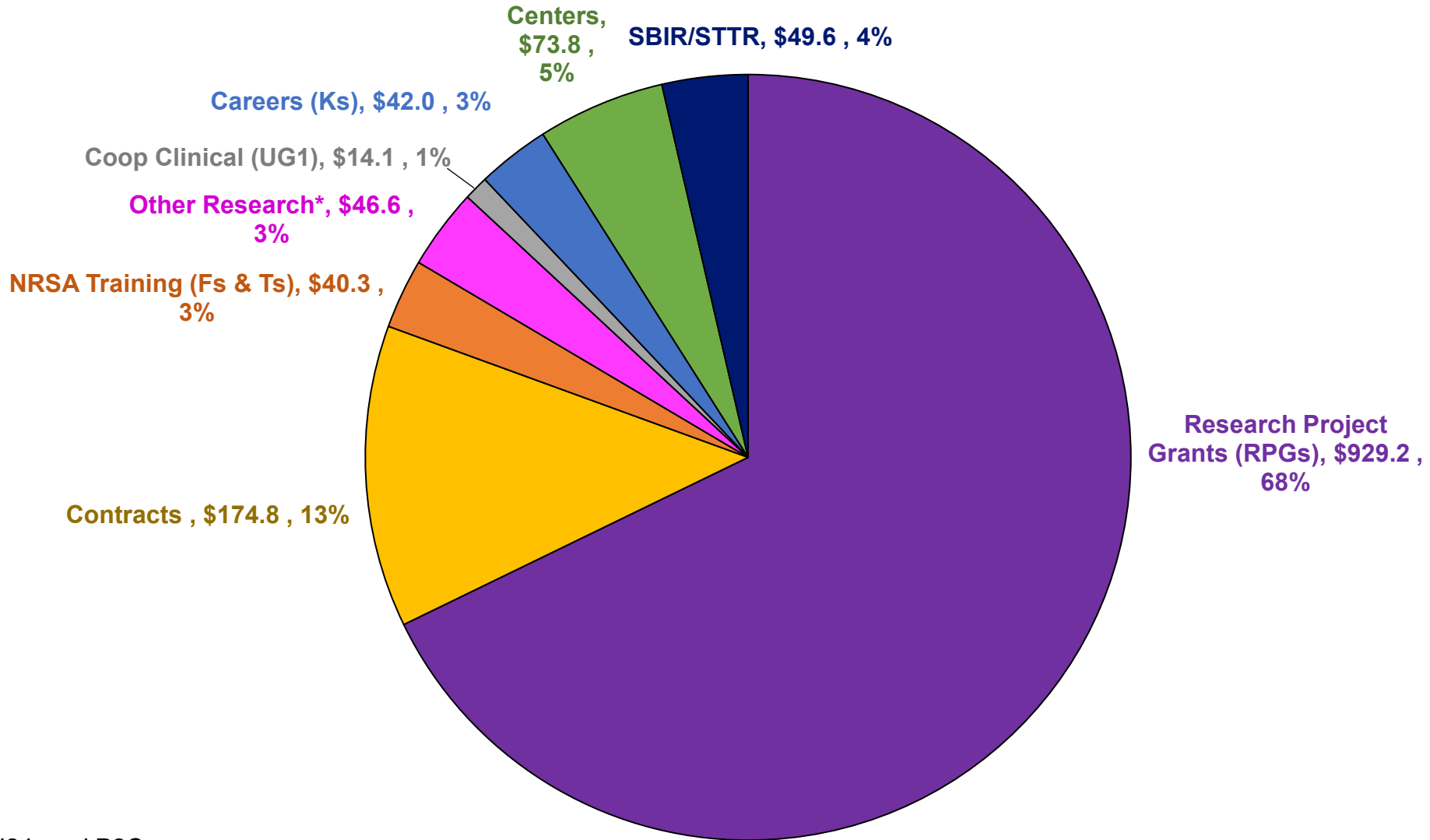
# NICHD Funds by Mechanism FY22 (Dollars in Millions)



\*such as R13, R25, U24, and P2C



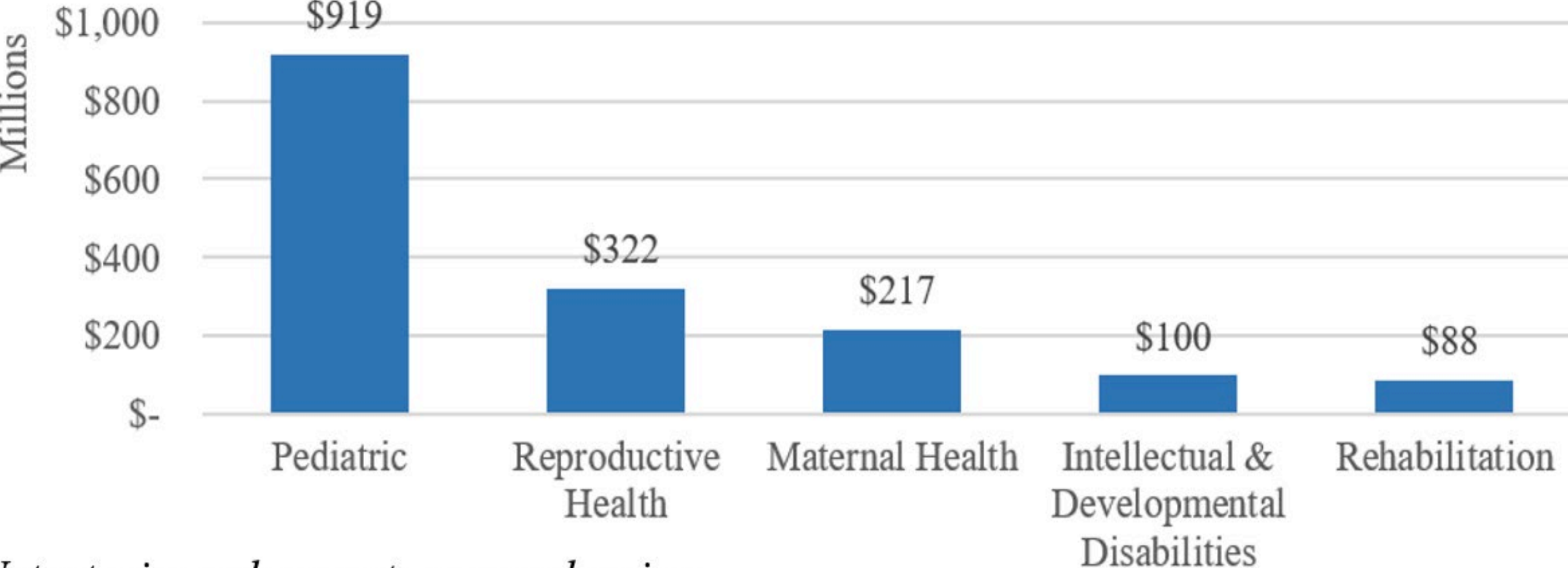
# NICHD FY22 Budget Extramural Only (Dollars in Millions)



\*such as R13, R25, U24, and P2C



# NICHD Funding by Research Area, FY22



*Note: topics and amounts are overlapping.*



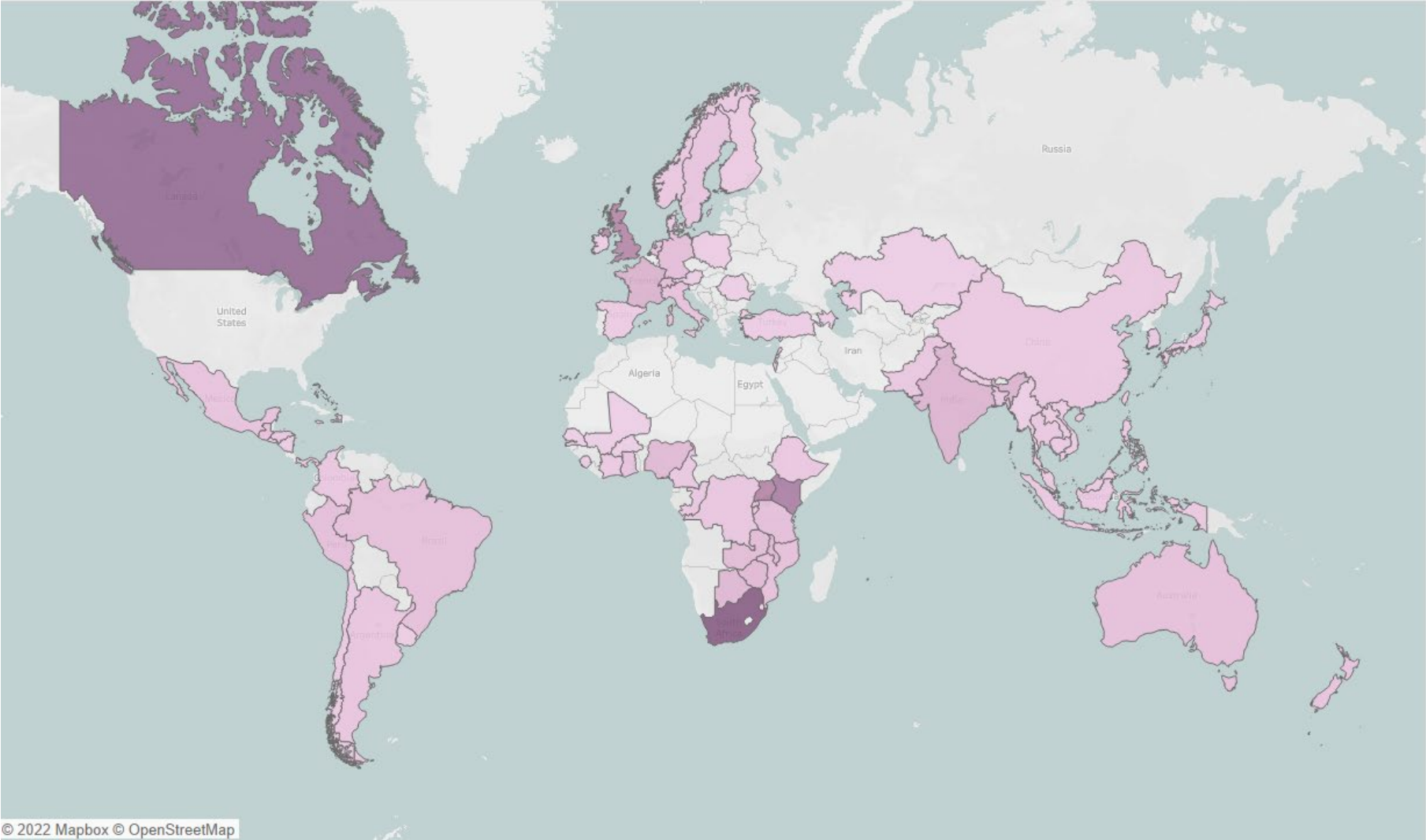
# Global Health Research



- NICHD has supported research around the globe since its establishment, with a strong commitment to continued global health research collaborations
- [NICHD Global Health Catalog](#), prepared by OGH with support from institute colleagues, provides annual reporting of global health activities across NICHD
  - Includes current research initiatives and achievements, collaborative partnerships, and staff membership on committees and working groups
- Additional information on NIH-wide global research can be found through the [World RePORT](#)



# NICHD-Funded Research by Country, FY21

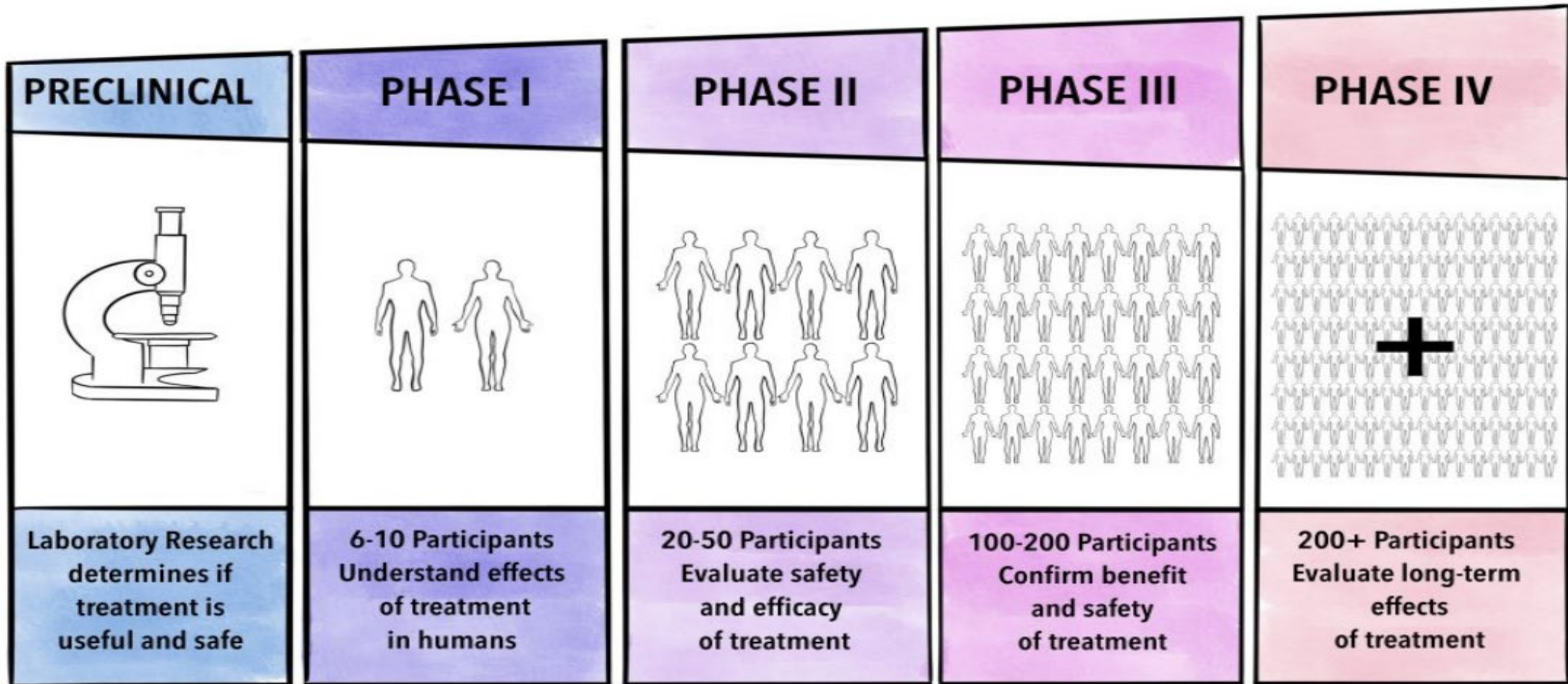




# Clinical Trials Networks



# Clinical Trial Phases and Approval Process



*Phases of clinical trials*



# NICHD Clinical Trial Networks

## Maternal-Fetal Medicine Units Network

EUNICE KENNEDY SHRIVER | NATIONAL INSTITUTE OF CHILD HEALTH AND HUMAN DEVELOPMENT



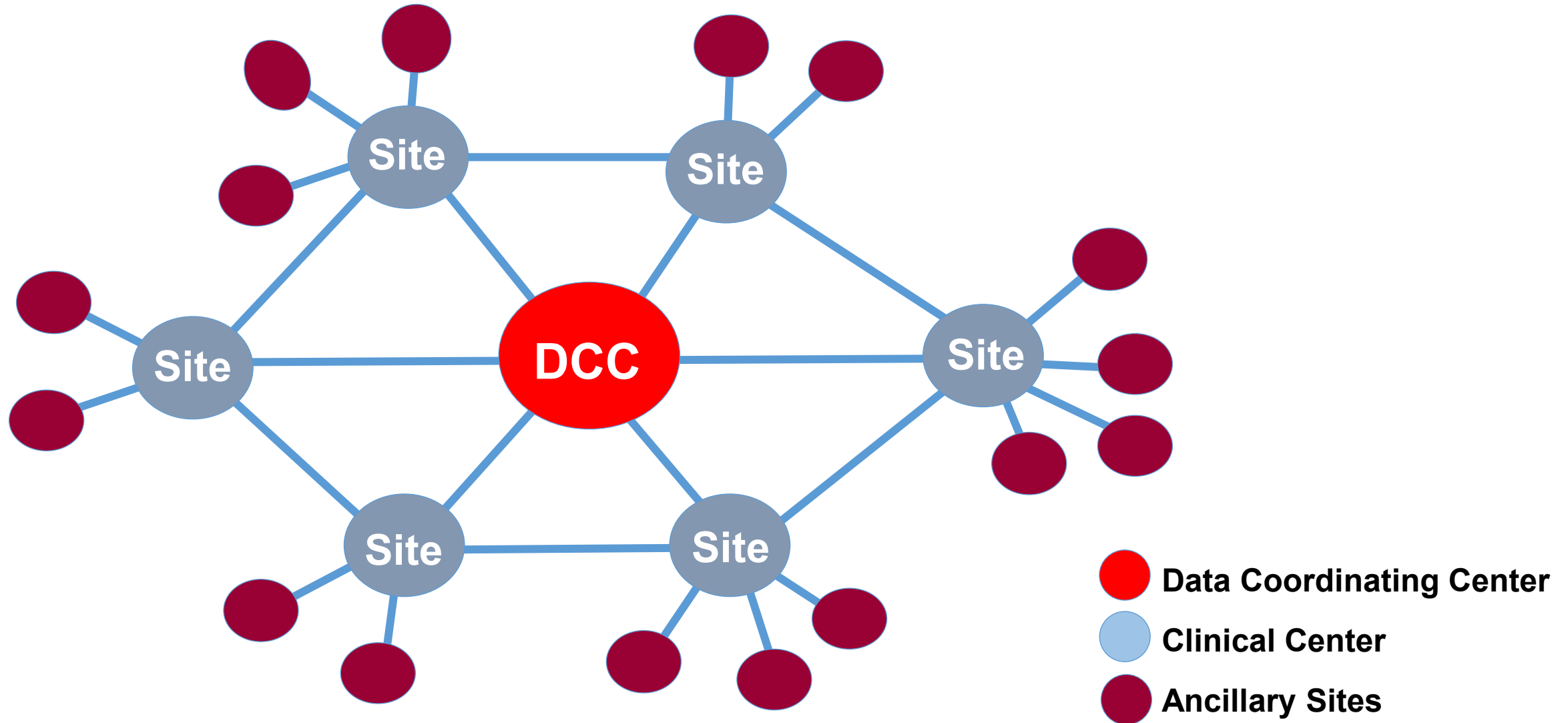
**NICHD**  
**NEONATAL RESEARCH NETWORK**



**Pelvic Floor  
Disorders Network**



# Clinical Trial Network Structure



# Clinical Trials Diversity

**2020**

**75%** Identified as White

**11%** Identified as Hispanic

**8%** Identified as Black or African American

**6%** Identified as Asian

- The Food and Drug Administration implemented a [Race and Ethnicity Diversity Plan](#) (referred to as “The Plan”) in 2022.
- COVID-19 pandemic sparked development of digital health technologies (DHTs) and the adoption of decentralized clinical trials (DCTs).





# **Training and Career Development**

# NICHD Needs Diverse Scientists at Every Level



**Expand the talent pool available for science**



**Wider range of perspectives to inform research questions**



**Avoid blind spots**



**Address cultural, other experiences of research participants**



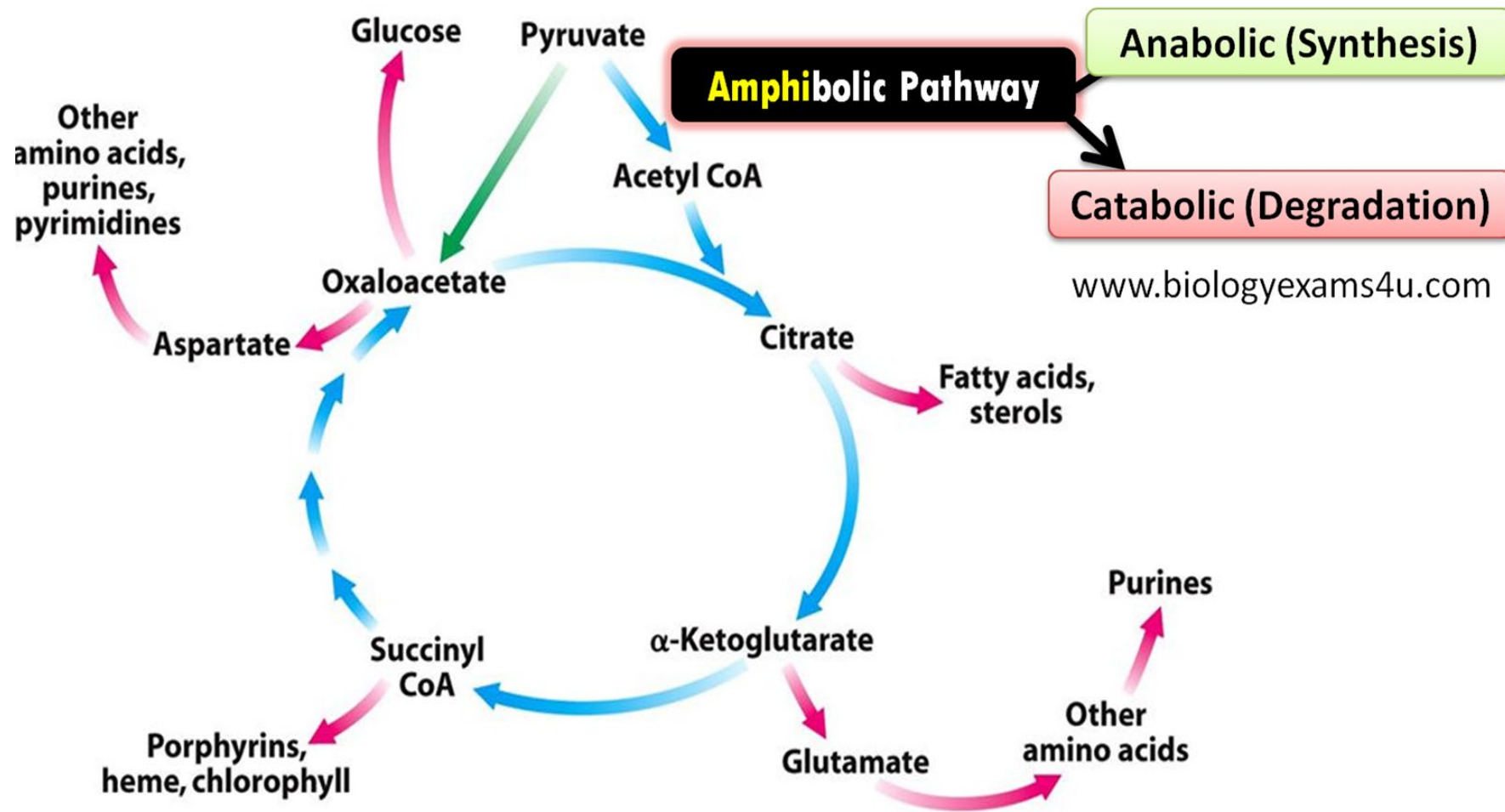
**Foster inclusive and successful teams**



**Improve external validity; research that is applicable to all**



# Training is a Pathway, Not a Pipeline



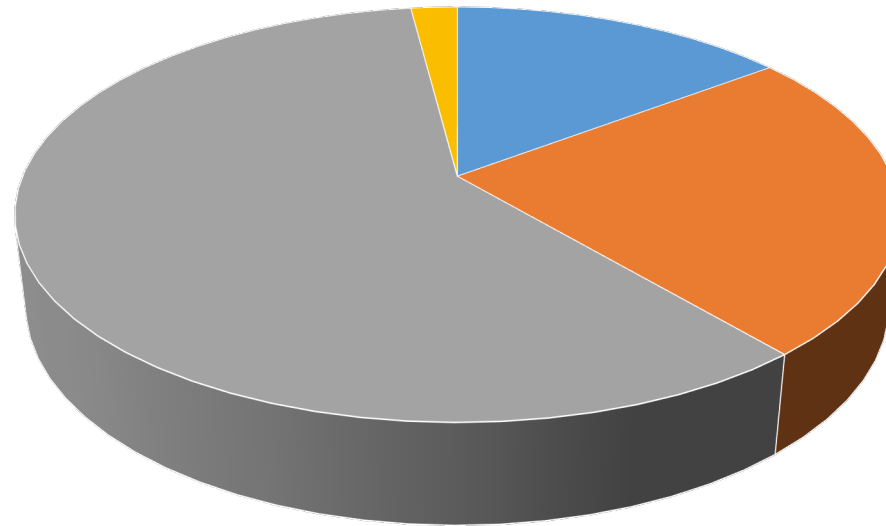
Molecules can enter and exit the TCA Cycle at multiple points

<https://www.biologyexams4u.com/2021/10/what-is-amphibolic-pathway-why-citric.html>



# Funding “Pie” of NICHD Training Support

## Current Funding by Training Mechanism



- individual fellowships (F) 15%
- training grants (T) 24%
- career development awards (K) 59%
- diversity and re-entry supplements 2%



<https://www.nichd.nih.gov/grants-contracts/training-careers>





# Training and Career Development at NIH

- Training in NICHD Division of Intramural Research
  - <https://www.nichd.nih.gov/grants-contracts/training-careers/intramural/DIR>
- NIH Office of Intramural Training and Education
  - <https://www.training.nih.gov/>
- NIH Clinical Center Office of Clinical Research Training and Medical Education
  - <https://www.cc.nih.gov/training/index.html>
- Jobs at NIH
  - <https://hr.nih.gov/jobs>





## **Some Advice**

# Who should you talk to at NIH?

- Program Officer (PO): Helps investigators apply for grants, interpret reviews, makes funding recommendations, manages award in noncompeting years
- Scientific Review Officer (SRO): Refers application to appropriate study section, identifies and recruits reviewers, assigns reviewers to your application, runs the study section meeting, produces summary statement
- Grants Management Specialist (GMS): Handles financial aspects of the grant award, non-scientific issues such as PI effort, changes in animal/human subject use, etc.



# When should you contact NIH staff?

- Program Officer: Before you submit an application and after the summary statement is available, anytime after application is recommended for funding
- Scientific Review Officer: After you submit an application and before the summary statement is available
- Grants Management Specialist: After application is recommended for funding and anytime an administrative issue arises
- “Firewall” between Program and Review: POs do not review grants, SROs do not fund grants



# How to identify right NIH contact

- Colleagues, friends, other researchers in your field
- Look at the acknowledgements section of publications: who funds the work?
- NIH RePORTER searches for funded grants (<https://reporter.nih.gov>)
- The Center for Scientific Review (<https://public.csr.nih.gov>) has information about study sections and the application process
- NIH Institute/Center websites, e.g. NICHD, NCI, NIAID



# In conclusion...

- Don't be the person who sends in an application, has the application reviewed, and receives a summary statement without communicating with NIH staff throughout the process
- Figure out which institute(s) may be interested in funding your research, and then contact program staff who manage grants similar to your work
- Develop a working relationship with NIH staff – the same people may be managing and reviewing your grants for a long time



# Thank you!

Email: [joe.gindhart@nih.gov](mailto:joe.gindhart@nih.gov)



<https://www.nichd.nih.gov/about/history/establishment>



